

Reference: Beach Blanket Babylon

Project No: 1010950

Date: 17th January 2014

Technical note

Re: Variation in Noise Levels around Beach Blanket Babylon with and without operation of first floor, December 2013 and January 2014

1.0 Summary

1.1 The noise climate around Beach Blanket Babylon (BBB) is dominated by road traffic noise, even late into the night. The operation of BBB has no significant impact on noise in the streets in the surrounding area. Some short duration increase in level can be observed at the Club Row end of Whitby Street when the first floor closes (for a period of 5 to 10 minutes) and it is possible to measure a small increase in noise level when people gather outside BBB rear door to smoke sometimes. However, noise levels from people outside other venues in the areas, and in particular outside Lounge Lover (immediately opposite BBB rear door) is similar in level (and in general the increase in level appears to be a little higher at other venues). Given the level of noise from other sources, particularly road traffic, these small increases are negligible.

2.0 Introduction

2.1 Sharps Redmore were asked by the owner of Beach Blanket Babylon to carry out a survey of noise levels in the area around BBB during its operation in the two weekends leading up to Christmas 2013 and in January 2014 in order to assist with the consideration of noise at a licensing hearing anticipated early in 2014 and to provide a baseline against which design targets could be set for some proposed changes at BBB which will require planning permission.

2.2 Measurements were made by Sharps Redmore staff on 13th, 14th and 21st December 2013 and the 10th – 11th January 2014 in the streets around BBB in the late evening and early hours of the night. On the evenings of 13th, 14th and 21st BBB held private parties in part of the first floor and we were asked to consider in particular the noise impact of these as part of the survey. On the evening of 10th to 11th January no party was held and the first floor of BBB was not in use.

2.3 Our client specifically asked us to evaluate and report on:

- Existing noise levels on a typical weekday night, when BBB was not holding an event at its first floor;

- ▣ Existing noise levels on a typical Friday or Saturday night, when BBB was not holding an event at its first floor;
- ▣ Typical noise levels on a night when BBB was holding an event at its first floor;
- ▣ The impact noise from people arriving and leaving the premises, compared with other noise sources in the area;
- ▣ A subjective assessment of noise and disturbance from each of the above to accompany the readings.

3.0 Survey Methodology

- 3.1 Manned measurements were made on 13th, 14th and 21th December 2013 and 10th to 11th January and 15th January 2014 whilst standing on the pavement unobtrusively with a small Type 2 sound level meter tucked inside a jacket and only the microphone and windshield visible on the lapel of the jacket. Observations and measurements were noted and these notes are shown in Appendix B. Equipment used the CEL 360 Noise Dosimeter in SLM mode, Serial no. 042710 with a microphone fixed to the lapel of a coat at approx. 1.5 metres above the ground. Manned measurements were made at ten locations, shown in Figure A1 in Appendix A marked as locations 1 to 10. Measurements were short duration, being typically between 2 and 3 minutes.
- 3.2 This technique meant that measurements could be carried out safely without drawing attention to the survey, but also meant that measurement conditions were not ideal. It would have been preferable to have measured using a Type 1 sound level meter (which has higher intrinsic precision) and to have placed the microphone on a tripod to have obtained free field measurements. It would also have been preferable to have measured over a longer duration and at fixed points. These differences between ideal conditions and those used will have introduced a higher than usual errors to results. Nevertheless, given the circumstances, we consider that the results allow a reasonable comparison to be made between different nights and different operating conditions.
- 3.3 Unmanned measurements were also made between 13th December and 16th December 2013 using a Norsonic Model 118 Type 1 precision sound level meter set up at first floor level to the rear of commercial units on Bethnal Green Road. This location was well screened from direct sound from road traffic on Bethnal Green Road and appears to provide a good correlation with readings taken at street level on Whitby Street concurrently. Readings at this location can therefore be used to provide an indication of noise levels on Whitby St over each evening when manned measurements were not made. This location is shown as Location 11 in Figure A1 in Appendix A.
- 3.4 Measurements were made of L_{Aeq} and L_{A90} values and the results, along with observations, are shown in Tables B1 to B10 and Figures B1 and B2 in Appendix B.

4.0 Terminology

- 4.1 The L_{Aeq} index is known as the A weighted equivalent noise level. It is often used for the assessment of overall noise exposure. This is a notional steady level which would, over a given period of time, deliver the same sound energy as the actual time-varying sound over the same period. Hence fluctuating levels can be described in terms of a single figure level. This value is often referred to as the ambient noise level.
- 4.2 The L_{A90} is the A weighted level exceeded for ninety per cent of the time, has been adopted to represent the background noise level.
- 4.3 The unit generally used for measuring environmental noise is the A-weighted sound pressure level in decibels, dB. The weighting is based on the frequency response of the human ear and has been found to correlate well with human subjective reactions to various sounds. A change of 3 dB is the minimum perceptible under normal conditions, and a change of 10 dB corresponds to a subjective halving or doubling of the loudness of a sound.

5.0 Consideration of results

- 5.1 Measured ambient noise levels were almost entirely due to road traffic. Bethnal Green Road was busy throughout all nights, even late into the night. To the north of Bethnal Green Road, on Whitby Street and Redchurch Lane, the background level (the level exceeded for 90% of the monitoring period) was less influenced by road traffic noise and so provides a better indicator of how noise levels fluctuate due to sources other than cars passing close to the monitoring point.
- 5.2 It is helpful, therefore, to look at how noise levels vary across the night by comparing the L_{A90} values. Figure B1 in Appendix B shows the variation in L_{A90} level over the evening and night of 13th to 14th, 14th to 15th and 15th to 16th December. These nights were Friday/Saturday, Saturday/Sunday and Sunday/Monday respectively. As can be seen, levels on Friday and Saturday were higher due to the fact that more people were out on these nights (and therefore there was more road traffic). Levels taken at ground level close to this monitoring point (on Whitby Street) between 2300 hours on 14th and 0200 hours on 15th show a consistent difference, with ground level readings being around 4 dB higher.
- 5.3 The reason for the higher levels occurring between around 2230 hours on 14th and 0130 hours on 15th is not known, but it is likely to be due to road traffic congestion leading to increased use of Chance Street. There were periods during the manned survey during the previous night (on 13th and 14th) between 2300 and 0100 hours when Bethnal Green Road traffic was immobile and at these times, road traffic noise levels were higher; surrounding streets were used more by taxis and more vehicle horns were sounded.

- 5.4 Parties on the first floor at BBB finished at 0300 hours on 14th, 15th and 21st December. There is no change in levels in the time trace shown in Figures B1 or B2. (Figure B2 shows the L_{Aeq} levels for the same time periods). This shows that there is no measureable change in noise levels in the next street resulting from people leaving the first floor parties when they close.
- 5.5 The fluctuations in level and overall differences between nights appears to be due almost entirely to the difference in road traffic flows on these nights, and there is no measureable difference occurring as a result of the use of the first floor area of BBB in the surrounding streets.
- 5.6 Measurements of noise levels and observations of activities on the evenings of 13th, 14th and 21st December are shown in Appendix B. As can be seen, there is no measureable or observable change in ambient noise or background noise in the surrounding area resulting from the operation of BBB. The streets around were generally very busy with people out partying in the run up to Christmas and noise levels being from vehicles rather than from music noise or raised voices. People passing in groups were sometimes shouting were this was noticeable although made little difference to the measured noise level.
- 5.7 On the night of the 21st December, measurements were made in Whitby Street immediately next to the door of BBB at the time when the first floor party was closed and people were leaving. At the Chance Street end of the road, there was no change in level, but at the Club Row end, for a period of around 5 minutes, levels in the street were marginally higher as a result of the voices of people leaving. To consider this change in level in context, the measured levels at this time were similar to those an hour or so earlier in the evening on that night or between 0130 and 0200 hours on 14th December when there was a small group of people outside the Lounge Lover (the club opposite the rear entrance to BBB on Whitby Street) talking and smoking.
- 5.8 Noise levels were measured on the night of 10th to 11th January (a Friday night) and again on 15th January (a Wednesday evening) when BBB was not holding an event at its first floor in an attempt to make a comparison with the nights when it was. A direct comparison of the weekend evenings / nights is not possible since the whole area was observed to be busier in the lead up to Christmas than on a weekend night early in January (as one might expect). However, it is possible to make some useful observations:
- ▣ Background noise levels in Whitby Street, Chance Street end between 0100 and 0400 hours varied between around 55 and 59 dB on nights when the first floor was in use and on nights when it was not.
 - ▣ In the centre of Whitby Street, the background level when BBB first floor was operational was between 53 and 61 dB between 0100 and 0230 hours and between 52 and 58 dB on nights when it was not operational.

- At Club Row end of Whitby Street, the background level was between 55 and 67 dB when the first floor was operational. On a night when BBB first floor was not operational the level was between 53 and 61 dB in the same period in that location. The higher levels occurred when there was some vehicular activity in Whitby St or when a number of people were standing outside either BBB or Lounge Lover smoking and talking. The increase in noise level during such times was relatively small and generally confined to the Club Row end of Whitby Street.
- There was no observable (or measureable) noise from music within BBB outside the premises in Whitby Street at any time.

6.0 Conclusions

- 6.1 The area is generally very busy at night and noise from road traffic and from people in the street is relatively high well into the night. In general, the operation of BBB (both first floor and other areas) did not impact in any noticeable or measureable way on noise levels in the street immediately outside the venue or in the surrounding streets.
- 6.2 There are two exceptions to this conclusion, which are:
- There was a small increase in level between 0300 and 0310 hours in part of Whitby Street when the first floor was closed on 21st December at 0300 hours. Considered in context, the increase in level at this time was similar to the increase in level which occurred when around 8 people were talking outside Lounge Lover on 14th December between 0130 and 0200 hours; and
 - Periods when a number of people gathered at the Club Row end of Whitby Street outside either BBB rear door. Considering this in context, the levels produced when this occurred were similar to (and a little below) those measured when people were outside Lounge Lover.
- 6.3 Overall, noise produced in the street and surrounding area arising from opening the first floor of BBB on the nights of 13th, 14th and 21st of December 2013 was negligible.

C F Bentley BSc(Hons), CEnv, CSci, MCIEH, MIEEnvSc, MIOA
clive@sharpsredmore.co.uk

APPENDIX A

PLAN SHOWING MONITORING LOCATIONS

APPENDIX B

RESULTS

Table B1: Survey results, Whitby St, centre – location 1

Date	Time	L _{Aeq} , dB	L _{A90} , dB	Observations
13-Dec	01:00	61	53	6 people outside rear door of BBB and Lounge lover. No music or other sound audible from either premises. Speech only. Levels from RTN - L _{Amax} from vehicle in Chance St
13-Dec	01:47	63	55	7 people outside smoking and talking quietly. Levels from RTN as before
13-Dec	02:00	65	58	14 people outside. RTN dominant as before, but voices raised a little now
13-Dec	02:15	62	57	3 people outside
13-Dec	23:10	76	62	15 people outside Lounge Lover. Very loud voices from these. No-one outside BBB
13-Dec	23:28	72	62	11 people outside Lounge Lover. 2 people outside BBB rear door. Relatively quiet speech from all.
14-Dec	00:50	69	61	11 people outside Lounge Lover. 3 outside BBB. No music audible and no significant level from voices. RTN in Bethnal Green Rd significant: traffic jam with car horns.
14-Dec	01:25	75	59	7 people outside Lounge Lover. None outside BBB. Maximum level was form a girl shouting as she left Lounge Lover. Some shouting also in Chance St from people passing.
14-Dec	01:40	68	60	18 people outside Lounge Lover. 2 outside BBB rear door
14-Dec	02:05	74	61	8 people outside Lounge Lover, 2 outside BBB rear door. RTN dominant. Some shouting from Redchurch Lane and Chance St.
10-Jan	19:53	70	58	4 males in street shouting and arguing, then a police siren on BG Rd
10-Jan	22:48	63	58	Female patron exits Lounge Lover, stands in street shouting into phone. 2 taxis pick up from Lounge Lover and drive up Whitby St
10-Jan	22:51	60	57	Music from Lounge Lover audible
10-Jan	23:57	63	58	2 taxis pick up from Lounge Lover
11-Jan	00:43	58	55	Music audible coming from direction of the BoxPark
11-Jan	00:53	62	58	Very few people visible in BBB and no music audible coming from BBB, some music audible from Lounge Lover.
11-Jan	01:13	62	57	
11-Jan	02:12	61	57	Music from BoxPark (Bethnal Green Rd) audible
11-Jan	02:53	59	54	RTN from BG Rd dominant also music from BoxPark audible

Date	Time	L _{Aeq} , dB	L _{A90} , dB	Observations
11-Jan	03:08	59	55	
11-Jan	03:12	60	55	
11-Jan	03:36	68	66	Refuse loader idling outside BBB, loader throwing bags of rubbish into the rear
11-Jan	03:39	59	52	
11-Jan	03:46	57	52	
15-Jan	20:15	62	58	Road Traffic Noise dominant (from BG Rd). Occasional vehicles passing in Chance St.
15-Jan	21:55	70	57	RTN dominant. Air conditioning at Les Trois Garcons audible.
15-Jan	22:55	68	58	2 people smoking outside Lounge Lover. RTN dominant. Some shouting in Club Row.
15-Jan	23:50	69	57	Group of 4 people left Lounge Lover, talking relatively quietly. RTN dominant.

Table B2: Survey results, Whitby St, Club Row end – location 2

Date	Time	L _{Aeq} , dB	L _{A90} , dB	Observations
21-Dec	01:35	64	60	7 patrons outside rear door smoking with 2 talking, road traffic noise on Bethnal Green Rd dominant
21-Dec	01:51	63	60	Door shut no patrons outside no music audible coming from bar
21-Dec	02:05	70	67	12 patrons outside smoking
21-Dec	02:08	69	64	18 patrons outside smoking
21-Dec	02:26	64	60	Doorman and 2 patrons smoking, car horn sounds on Bethnal Green Rd, 3 males not connected with bar, get into car parked on Club Row and slam doors
21-Dec	02:30	62	58	No patrons outside, traffic noise from Bethnal Green Rd dominant
21-Dec	02:33	67	64	2 taxis outside bar engines idling, 7 patrons outside smoking, one talking loudly
21-Dec	02:50	63	54	2 patrons leave bar, siren on Bethnal Green Rd them moped passes on Club Row
21-Dec	02:57	65	58	2 patrons outside smoking, 3 patrons leave but stand in street talking
21-Dec	03:01	76	61	Music finished in BBB at 03:00. Patrons leaving via Whitby St
21-Dec	03:11	64	59	Patrons leaving still
21-Dec	03:22	65	57	Patrons still leaving, noise from other pedestrians in Bethnal Green Rd and Club Row not connected with BBB.

Date	Time	L _{Aeq} , dB	L _{A90} , dB	Observations
21-Dec	03:33	70	61	Bar doors closed and locked, car pulls up and toots horn in Whitby Street then pulls away
21-Dec	03:37	63	52	Siren in background, road traffic and pedestrians shouting on Bethnal Green Rd
21-Dec	03:41	64	56	Aircon unit on wall of Les Trois Garcons starts up plus road traffic on Bethnal Green Road
21-Dec	03:43	62	56	Aircon unit on wall of Les Trois Garcons plus road traffic on Bethnal Green Road
21-Dec	03:54	66	56	Refuse lorry pulls up on Club Row and reverses into Whitby St with white noise reversing alarms sounding then pulls away in opposite direction along Club Row
21-Dec	03:57	64	55	Bus sounds horn on Bethnal Green Rd
10-Jan	19:58	65	59	RTN from BG Rd and pedestrians walking up Club Row talking
10-Jan	22:44	64	57	2 taxis drive past
11-Jan	00:01	63	57	6 patrons outside Lounge Lover smoking and talking
11-Jan	00:48	68	61	3 Patrons outside Lounge Lover smoking
11-Jan	01:10	66	60	Lounge Lover still open
11-Jan	02:16	68	59	
11-Jan	02:57	66	55	Air handling unit on Trois Garcons starts up
11-Jan	03:05	66	53	Workmen enter van parked on Club Row and slam doors
11-Jan	03:31	66	57	Air handling unit on Trois Garcons starts up again, refuse van arrives at 03:33 and collects rubbish from BBB
11-Jan	03:49	65	53	Borough refuse loader HGV2 on Club Row/Redchurch St
11-Jan	02:57	66	55	Air handling unit on Les Trois Garcons starts up
15-Jan	20:20	67	58	RTN in BG Rd dominant. Air conditioning on the wall of Les Trios Garcons audible. Car alarm in BG Rd for approx. 30 seconds.
15-Jan	22:00	73	57	RTN in BG Rd dominant. A/C at Les Trois Garcons also.
15-Jan	23:00	67	57	Road Traffic noise dominant. 2 People outside Lounge Lover.
16-Jan	00:00	68	62	RTN dominant. 4 people having just left Lounge Lover talk (quietly) in Whitby St and in Club Row.

Table B3: Survey results, Whitby St, Chance St end – location 3

Date	Time	L _{Aeq} , dB	L _{A90} , dB	Observations
21-Dec	01:39	65	59	Road traffic and pedestrians on Bethnal Green Rd dominant, patrons outside inaudible
21-Dec	02:12	60	58	Patrons still smoking outside bar but traffic noise from Bethnal Green Rd and pedestrians shouting etc dominant noise sources
21-Dec	02:14	64	59	Ditto
21-Dec	03:15	61	56	Patrons still leaving BBB
21-Dec	03:18	64	59	Patrons outside bar, taxi idling outside and cars also passing on Chance St from the taxi office on corner of Chance and Redchurch
21-Dec	03:46	62	57	Road traffic noise from Bethnal Green Rd
21-Dec	03:49	62	55	Car horns tooting on Ebor St
10-Jan	20:02	67	57	RTN including ambulance siren on BG Rd and pedestrians talking as they pass by
10-Jan	22:39	63	57	Lounge Lover open, patrons outside talking
11-Jan	00:05	63	58	RTN from BG Rd dominant noise source, rain heavier than start of shift, roads wet.
11-Jan	00:55	65	59	RTN from BG Rd dominant noise source.
11-Jan	01:17	63	55	RTN from BG Rd dominant, music audible from BoxPark- words audible "1999" by Prince.
11-Jan	02:09	64	56	
11-Jan	02:50	61	57	Music from BoxPark, RTN and passing pedestrians
11-Jan	03:15	63	56	Road traffic noise from BG Rd, lots of shouting from Ebor Street
11-Jan	03:42	61	55	
15-Jan	20:05	66	58	Road traffic noise dominant. Several cars using Chance Street. No people in Whitby St
15-Jan	21:47	66	56	Road traffic noise from Bethnal Green Rd dominant. No people in Whitby St
15-Jan	22:50	67	57	Road traffic noise from Bethnal Green Rd dominant. 2 people in Whitby St – other end.
15-Jan	23:45	69	57	RTN dominant. Some cars in Chance St. People passing in Chance St with raised voices.

Table B4: Survey results, Bethnal Green Rd, immediately outside BBB on north side – location 4

Date	Time	L _{Aeq} , dB	L _{A90} , dB	Observations
13-Dec	01:10	69	56	RTN dominant. Road quite busy. People passing - generally quiet but occasional raised voices. No noise from BBB or its customers. Music from basement just audible on pavement immediately outside premises. Not possible to measure level due to other sources too high.
13-Dec	01:52	69	59	Group of people outside Les Trois Garçons talking on pavement. RTN dominant. No music audible from BBB.
13-Dec	23:15	73	63	RTN dominant. 14 people smoking outside BBB. Bass beat from BBB basement just audible immediately outside.
21-Dec	02:42	73	62	Road traffic noise dominant, some bass beat coming from 1st floor of bar
21-Dec	03:26	73	60	Road traffic and pedestrians
21-Dec	04:00	71	61	Road traffic noise
10-Jan	20:07	75	68	RTN dominant, faint music from BBB 10 people smoking and talking outside.
10-Jan	22:34	73	66	Faint music audible coming from BBB
11-Jan	00:10	76	74	RTN dominant. Some bass beat from BBB
11-Jan	01:00	76	70	RTN dominant, 4 patrons outside BBB smoking
11-Jan	01:26	77	68	RTN dominant
11-Jan	02:20	74	63	Music from BoxPark and Road Traffic noise
11-Jan	03:02	74	56	RTN from BG Rd dominant also music from BoxPark audible and passing pedestrians
11-Jan	03:23	72	59	Ditto
15-Jan	20:25	78	69	RTN and people's voices (passing pedestrians) are the only sources. RTN is considerably more dominant than people.
15-Jan	22:10	71	66	RTN only.
15-Jan	23:10	73	67	
16-Jan	00:05	77	66	

Table B5: Survey results, Bethnal Green Rd, directly opposite BBB – location 5

Date	Time	L _{Aeq} , dB	L _{A90} , dB	Observations
13-Dec	01:20	70	59	Road traffic dominant. During occasional lulls in traffic, high frequency component of music from first floor of BBB just audible. Likely to be due to windows not being sealed - or perhaps a crack in the window.
13-Dec	01:56	70	63	RTN as before - BBB first floor high frequency just audible during occasional lulls in traffic.
13-Dec	02:10	70	62	Ditto
13-Dec	23:20	73	66	RTN dominant. Many groups of young men shouting and singing passing by (not associated with BBB). No sound from BBB.
14-Dec	01:10	71	66	13 people smoking outside BBB. Voices audible, but not raised. RTN still dominant. Many people passing - no shouting.
14-Dec	01:20	71	65	28 people left BBB in a 5 minute period. Noise from their speech is not distinguishable from groups of other people passing. RTN remains dominant. Maximum level was from a group of women passing (not associated with BBB) screaming quite close to monitoring location.
14-Dec	01:30	76	71	58-64 people leaving BBB and talking as they leave. RTN still dominant, but voices audible when there is a lull in traffic. Occasional shout. Max level from car horn.
14-Dec	01:35	72	66	31 people outside BBB, dispersing. RTN dominant. Only 12 people left at end of monitoring period.
14-Dec	01:55	76	67	No-one outside BBB front now. RTN dominant. Fewer people in the street. Maximum level from car horns.
14-Dec	02:00	72	66	Ditto
21-Dec	02:47	71	60	Music from BBB inaudible, road traffic noise dominant siren in distance
21-Dec	03:29	71	61	Road traffic, several cars tooting horns
10-Jan	20:11	72	62	Road traffic dominant. No music audible from BBB
10-Jan	22:31	73	63	Faint music from BBB when no traffic, otherwise traffic noise dominant, max was from slamming door of taxi.
11-Jan	00:13	74	67	RTN dominant, no music audible from BBB.
11-Jan	01:04	76	69	RTN dominant, pedestrians passing talking loudly.
11-Jan	01:29	75	62	Ditto
11-Jan	02:25	73	66	Ditto
11-Jan	03:27	74	65	Ditto

Date	Time	L _{Aeq} , dB	L _{A90} , dB	Observations
15-Jan	20:35	75	67	RTN only
15-Jan	22:15	73	62	
15-Jan	23:15	73	67	
16-Jan	00:15	72	72	

Table B6: Survey results, Bethnal Green Rd, south side, opposite Rich Mix – location 6

Date	Time	L _{Aeq} , dB	L _{A90} , dB	Observations
13-Dec	01:25	73	63	No BBB sound at all here. RTN dominant. Bottles being dumped outside Les Trois Garcon twice.
14-Dec	01:15	68	62	RTN dominant.
21-Dec	02:18	73	62	RTN dominant. Pedestrians shouting also
10-Jan	20:16	68	62	Road traffic noise dominant, people outside cinema talking.
10-Jan	22:26	70	60	RTN dominant, pedestrians passing- talking loudly, some music coming from the cinema
11-Jan	00:18	72	64	RTN dominant, pedestrians passing- talking loudly, cinema doors closed no one outside.
11-Jan	01:34	73	59	Ditto
11-Jan	02:29	75	65	Ditto

Table B7: Survey results, Bethnal Green Rd, south side, opposite Redchurch – location 7

Date	Time	L _{Aeq} , dB	L _{A90} , dB	Observations
13-Dec	01:28	71	66	RTN dominant.
10-Jan	20:21	71	65	Busy junction with lights, road traffic noise dominant
10-Jan	22:22	72	65	RTN , 2 buses
11-Jan	00:22	72	67	3 road sweepers parked and idling at side of road.
11-Jan	01:38	72	63	RTN
11-Jan	02:37	71	65	Pedestrians and road traffic including car horns twice

Table B8: Survey results, outside Redchurch (PH) – location 8

Date	Time	L _{Aeq} , dB	L _{A90} , dB	Observations
13-Dec	01:37	70	60	Group of around 20 people outside The Redchurch. Loud talking and taxis turning. Very busy and subjectively rather rowdy atmosphere
10-Jan	20:25	66	61	Road traffic noise dominant. Patrons at Brew Dog outside smoking and talking loudly, between 4 and 8 patrons of Redchurch PH outside talking and smoking.
10-Jan	22:18	69	63	
11-Jan	00:27	70	64	
11-Jan	01:42	70	62	
11-Jan	02:37	72	62	
11-Jan	03:54	66	59	Redchurch PH closed to patrons- staff closing up

Table B9: Survey results, Redchurch St, Club Row end – location 9

Date	Time	L _{Aeq} , dB	L _{A90} , dB	Observations
13-Dec	01:41	65	55	Relatively quiet. RTN from Bethnal Green Rd and other roads is dominant source.
21-Dec	01:47	69	59	Pedestrians and road traffic
21-Dec	02:39	55	53	RTN dominant
10-Jan	20:30	63	56	RTN from BG Rd dominant, pedestrians passing talking.
10-Jan	22:13	62	56	Pedestrians and road traffic
11-Jan	00:32	62	56	RTN dominant
11-Jan	02:00	65	58	Group of 4 males "singing" on the street corner
11-Jan	02:42	63	53	RTN from BG Rd dominant

Table B10: Survey results, Redchurch St, Chance Street end – location 10

Date	Time	L _{Aeq} , dB	L _{A90} , dB	Observations
13-Dec	01:44	63	54	Relatively quiet. RTN from Bethnal Green Rd and other roads is dominant source. Group of young men in the distance shouting very loudly.
21-Dec	01:43	62	57	2 pedestrians walk past talking loudly
10-Jan	20:35	64	59	People talking outside Owl and Pussycat PH, passing pedestrians and RTN from BG Rd
10-Jan	22:09	65	58	Owl and Pussycat still open, people in street walking in groups between venues.
11-Jan	00:36	60	55	No one outside Owl and Pussycat RTN from BG Rd dominant
11-Jan	02:05	63	57	Pedestrians and road traffic
11-Jan	02:46	64	55	Pedestrians and road traffic

Figure B1: Background levels (L_{A90}) at location 11, 13th to 16th December 2013

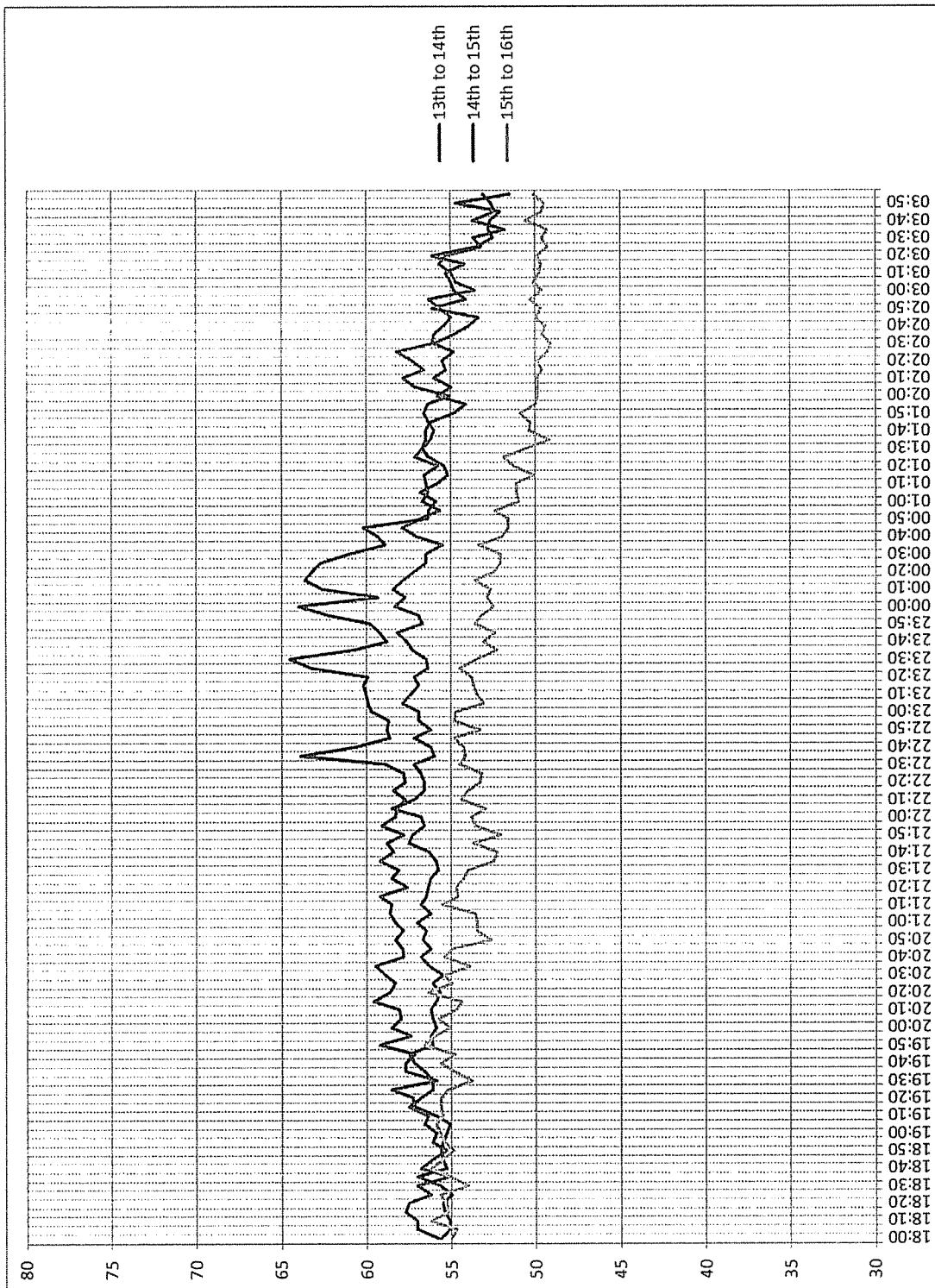


Figure B2: Ambient levels (L_{Aeq}) at location 11, 13th to 16th December 2013

